



FB c "L '9HF &' \* \$) \* &\$

fBUHŁ %&! ÷ ' l &\$&'

fDU[ YŁ '%cZ%+

# Test Report

f9J 9F @ < H'9@97HF C B =7G'7C "ž@H8 "Ł

\*!, fB C " \*!, žN< C B; < l 5 f 8 "žG<l @B '8 -GH"žB 9K 'H5 -D9=7 H M&' , \* \$žH5 -K 5 B Ł

(The following sample(s) was/were submitted and identified by the applicant

as)

BASIC INFORMATION	
Type of Product	HIGH POWER
Supplier Company Name	EVERLIGHT
Address	NO.6-8, ZHONGHUA RD., SHULIN DIST., NEW TAIPEI CITY 23860, TAIWAN
Tel / Fax / Email	TEL:886-2685-6688
	FAX:886-2685-6699
	E-MAIL: allenchiang@everlight.com
Contact Person	Allen
EVERLIGHT REPORT NO	EVERLIGHT-HIGH POWER ELCH / EHP-C04 / ELAP / FC2016 / FC1717 SERIES Sampling Product : FC2016GF14MP-S0130-2T-SGS-12-Jul-2023
PRODUCT INFORMATION	
Product/component Sample description	FLASH
Quantity (numbers or weight)	0.0083 g
EVERLIGHT P/N	HIGH POWER ELCH / EHP-C04 / ELAP / FC2016 / FC1717 SERIES Sampling Product : FC2016GF14MP-S0130-2T
Product Lot No	Y230202A4001BA7WLMP
Country of Origin	TAIWAN
TEST INFORMATION	
Sample preparation	CUTTING
Test Method	RoHS: IEC 62321, Halogen: BS EN 14582
MDL	Cd, Pb, Hg: 2 mg/kg, PBBs/PBDEs: 5 mg/kg, Halogen: 50 mg/kg

fGUa d`Y`Gi Va ]hYX`6rt

f9J 9F @ < H'9@97HF C B =7G'7C "ž@H8 "Ł

fGUa d`Y`F YW`j ]b[ '8 UHŁ : 30-Jun-2023

fHYgh]b[ 'DYf]cXŁ : 30-Jun-2023 to 12-Jul-2023

(Test Results) : fD`YUgY`fYZf`hc`Zc`ck ]b[ 'dU[ YgŁ

Allen Chiang



PIN CODE: 4FD27624

This document is issued by the Company subject to its General Conditions of Service printed overleaf, available on request or accessible at <https://www.sgs.com.tw/terms-of-service> and, for electronic format documents, subject to Terms and Conditions for Electronic Documents at <https://www.sgs.com.tw/terms-of-service>. Attention is drawn to the limitation of liability, indemnification and jurisdiction issues defined therein. Any holder of this document is advised that information contained hereon reflects the Company's findings at the time of its intervention only and within the limits of client's instruction, if any. The Company's sole responsibility is to its Client and this document does not exonerate parties to a transaction from exercising all their rights and obligations under the transaction documents. This document cannot be reproduced, except in full, without prior written approval of the Company. Any unauthorized alteration, forgery or falsification of the content or appearance of this document is unlawful and offenders may be prosecuted to the fullest extent of the law. Unless otherwise stated the results shown in this test report refer only to the sample(s) tested.



FB c "L '9HF &' \* \$) \* &\$

fB UH YL '%&! i ' l &\$&'

fDU[ YL '&'cZ%+

# Test Report

f9J 9F @; < H'9@97HF C B =7G'7C "ž@H8 "L

\*!, fB C " \*!, žN< C B; < l 5 F 8 "žG<l @B '8 -GH"žB 9K 'H5 -D9=7 H M&' , \* \$žH5 -K 5 B L

(Test Requested) : (1) F c < G' &\$%#\*) #9l '5bbYl '= f9l L'&\$%) #, \*' ž8 6Dž66Dž8 9< Dž8 -6D f5g

specified by client, with reference to RoHS 2011/65/EU Annex II and amending Directive (EU) 2015/863 to determine Cadmium, Lead, Mercury, Cr(VI), PBBs, PBDEs, DBP, BBP, DEHP, DIBP contents in the submitted sample(s).

(2) D5 < g' f5g'gdYWZjYX 'VmWjYbžhc 'hYghD5 < g and other item(s).

(Conclusion) : (1) ž8 6Dž 66Dž8 9< Dž8 -6D F c < G' &\$%#\*) #9l '5bbYl '= f9l L' &\$%) #, \*'

sample(s), the test results of Cadmium, Lead, Mercury, Cr(VI), PBBs, PBDEs, DBP, BBP, DEHP, DIBP comply with the limits as set by RoHS Directive (EU) 2015/863 amending Annex II to Directive 2011/65/EU.)

(2) f5ZDGŁ; G D5 < g ' ' ' f5UgYX 'i dcb 'h Y 'dYfZc fa YX 'hYghg'c b 'gi Va ]hYX the submitted sample(s), the test results of PAHs (15 items) comply with the 'ja ]hg'cZD5 < g'fYei ]fYa Ybh'f7UhY[ c fm' L C h Yf WŁbgi a Yf'dfcXi WŁg 'Ug'gYh by German Committee on Product Safety (AfPS) GS PAHs.)

## (Test Part Description)

No.1 : HIGH POWER ELCH / EHP-C04 / ELAP / FC2016 / FC1717 SERIES

## (Test Results)

(Test Items)	(Method)	(Unit)	MDL	(Result)	(Limit)
				No.1	
f7XŁf7UXa ]i a f7XŁ	-97 '* &' &%d ) . &\$%	mg/kg	2	n.d.	100
fDVŁfŁYUX fDVŁ	fK ]h 'fYZfYbW' 'hc -97 '* &' &%d ) . 2013, analysis was performed by ICP-OES.)	mg/kg	2	n.d.	1000

This document is issued by the Company subject to its General Conditions of Service printed overleaf, available on request or accessible at <https://www.sgs.com.tw/terms-of-service> and, for electronic format documents, subject to Terms and Conditions for Electronic Documents at <https://www.sgs.com.tw/terms-of-service>. Attention is drawn to the limitation of liability, indemnification and jurisdiction issues defined therein. Any holder of this document is advised that information contained hereon reflects the Company's findings at the time of its intervention only and within the limits of client's instruction, if any. The Company's sole responsibility is to its Client and this document does not exonerate parties to a transaction from exercising all their rights and obligations under the transaction documents. This document cannot be reproduced, except in full, without prior written approval of the Company. Any unauthorized alteration, forgery or falsification of the content or appearance of this document is unlawful and offenders may be prosecuted to the fullest extent of the law. Unless otherwise stated the results shown in this test report refer only to the sample(s) tested.





FB c "L '9HF &' \* \$) \* &\$

FB UHYL '%&! > ' !&\$&

fDU[ YL '( 'cZ%+

# Test Report

f9J 9F @ < H'9@97HF C B =7G'7C "Z@H8 "L

\*!, 'fB C " \*!, žN< C B; < l 5 f 8 "žG<l @B '8 -GH"žB 9K 'H5 -D9=7 #HM&', \* \$žH5 -K 5 B L

(Test Items)	(Method)	(Unit)	MDL	(Result)	(Limit)
				No.1	
phthalate (BBP)	2017, analysis was performed by GC/MS.)	mg/kg	50	n.d.	1000
phthalate (DBP)	2017, analysis was performed by GC/MS.)	mg/kg	50	n.d.	1000
ethylhexyl phthalate (DEHP)	2017, analysis was performed by GC/MS.)	mg/kg	50	n.d.	1000
phthalate (DIBP)	2017, analysis was performed by GC/MS.)	mg/kg	50	n.d.	1000
phthalate (DIDP) (CAS No.: 26761-40-0, 68515-49-1)	2017, analysis was performed by GC/MS.)	mg/kg	50	n.d.	-
phthalate (DINP) (CAS No.: 28553-12-0, 68515-48-0)	2017, analysis was performed by GC/MS.)	mg/kg	50	n.d.	-
phthalate (DNOP) (CAS No.: 117-84-0)	2017, analysis was performed by GC/MS.)	mg/kg	50	n.d.	-
phthalate (DNPP) (CAS No.: 131-18-0)	2017, analysis was performed by GC/MS.)	mg/kg	50	n.d.	-
phthalate (DNHP) (CAS No.: 84-75-3)	2017, analysis was performed by GC/MS.)	mg/kg	50	n.d.	-
methoxyethyl phthalate (DMEP) (CAS No.: 117-82-8)	2017, analysis was performed by GC/MS.)	mg/kg	50	n.d.	-
phthalate (DMP) (CAS No.: 131-11-3)	2017, analysis was performed by GC/MS.)	mg/kg	50	n.d.	-

This document is issued by the Company subject to its General Conditions of Service printed overleaf, available on request or accessible at <https://www.sgs.com.tw/terms-of-service> and, for electronic format documents, subject to Terms and Conditions for Electronic Documents at <https://www.sgs.com.tw/terms-of-service>. Attention is drawn to the limitation of liability, indemnification and jurisdiction issues defined therein. Any holder of this document is advised that information contained hereon reflects the Company's findings at the time of its intervention only and within the limits of client's instruction, if any. The Company's sole responsibility is to its Client and this document does not exonerate parties to a transaction from exercising all their rights and obligations under the transaction documents. This document cannot be reproduced, except in full, without prior written approval of the Company. Any unauthorized alteration, forgery or falsification of the content or appearance of this document is unlawful and offenders may be prosecuted to the fullest extent of the law. Unless otherwise stated the results shown in this test report refer only to the sample(s) tested.





FB c "L' 9HF &' \* \$) \* &\$

FB UH YL %&! > ' ! &\$&'

fDU[ YL '\* ' cZ%+

# Test Report

f9J 9F @ < H'9@97 HF C B =7G'7C "ž@H8 "L

\*!, 'fB C " \*!, žN< C B; < l 5 ' F 8 "žG<l @B ' 8 -GH"žB 9K 'H5 -D9=7 H M&' , \* \$žH5 -K 5 B L

(Test Items)	(Method)	(Unit)	MDL	(Result)	(Limit)
				No.1	
(Polycyclic Aromatic Hydrocarbons) (PAHs)					
fUL 'f6Ybnc Q@mfYbYLF7 5G'B c'.) \$!' &! , L	5 ZDG; G &\$%- . \$% D5? # fk jh' fYZfYbW' hc '5 ZDG; G 2019:01 PAK, analysis was performed by GC/MS.)	mg/kg	0.2	n.d.	
fYL 'f6Ybnc Q@mfYbYLF7 5G'B c'. %& - +!		mg/kg	0.2	n.d.	
2) f6Ybnc Q@bhl fUWbYLF7 5G'B c'.) *!) !		mg/kg	0.2	n.d.	
3) fVl 'f6Ybnc Q@i c fUbh YbYLF7 5G'B c'. 205-99-2)		mg/kg	0.2	n.d.	
fL 'f6Ybnc Q@i c fUbh YbYLF7 5G'B c'. 205-82-3)		mg/kg	0.2	n.d.	
fL 'f6Ybnc Q@i c fUbh YbYLF7 5G'B c'. 207-08-9)		mg/kg	0.2	n.d.	
fV \fmgYbYLF7 5G'B c'. %& ! \$% - L		mg/kg	0.2	n.d.	
fB jYbnc Q@ bhl fUWbYLF7 5G'B c'. 53-70-3)		mg/kg	0.2	n.d.	
f6Ybnc Q ž ž@YfmYbYLF7 5G'B c'. %& % 24-2)		mg/kg	0.2	n.d.	
f6XYbc Q&ž ! V@mfYbYLF7 5G'B c'. 193-39-5)		mg/kg	0.2	n.d.	
fB bh fUWbYLF7 5G'B c'. %&\$! %&! +L		mg/kg	0.2	n.d.	
f' i c fUbh YbYLF7 5G'B c'. %&\$*! ( (! \$L		mg/kg	0.2	n.d.	
fD \YbUbh fYbYLF7 5G'B c'. , ) ! \$% , L		mg/kg	0.2	n.d.	
fDmfYbYLF7 5G'B c'. %&- ! \$ \$! \$L		mg/kg	0.2	n.d.	
fB Ud \h U'YbYLF7 5G'B c'. - % &\$! ' L		mg/kg	0.2	n.d.	
15 (Sum of 15 PAHs)	mg/kg	-	n.d.		

This document is issued by the Company subject to its General Conditions of Service printed overleaf, available on request or accessible at <https://www.sgs.com.tw/terms-of-service> and, for electronic format documents, subject to Terms and Conditions for Electronic Documents at <https://www.sgs.com.tw/terms-of-service>. Attention is drawn to the limitation of liability, indemnification and jurisdiction issues defined therein. Any holder of this document is advised that information contained hereon reflects the Company's findings at the time of its intervention only and within the limits of client's instruction, if any. The Company's sole responsibility is to its Client and this document does not exonerate parties to a transaction from exercising all their rights and obligations under the transaction documents. This document cannot be reproduced, except in full, without prior written approval of the Company. Any unauthorized alteration, forgery or falsification of the content or appearance of this document is unlawful and offenders may be prosecuted to the fullest extent of the law. Unless otherwise stated the results shown in this test report refer only to the sample(s) tested.



FB c "L '9HF &' \* \$) \* &\$

fB UHyl %&! > ' l &\$&'

fDU[ YL ' + 'cZ%+

# Test Report

f9J 9F @ < H'9@97HF C B =7G'7C "z@H8 "L

\*!, fB C " \*!, žN< C B; < l 5 F 8 "žG<l @B '8 -GH"žB 9K 'H5 -D9=7 #HM&', \* \$žH5 -K 5 B L

(Note)

1. a [ #\_ [ ' l ' dda \$ "%k h ' l ' \$ "% ' l ' %\$\$\$ dda

2. A 8 @1 ' A Yh\cX '8 YHYVW]c b @]a ]hfl L

3. b "X " "1 ' B ch8 YHYVWYX fl L / A 8 @# ' @Ygg'h\ Ub ' A 8 @

4. " l " "1 ' B chFY [ i ' UHYX ' fl L

5. fD: C G ' UbX ' ]hg'gU'hg ]bWi X]b [ L:

CAS No.: 1763-23-1, 2795-39-3, 29457-72-5, 29081-56-9, 70225-14-8, 56773-42-3, 251099-16-8, 307-35-7, 91036-71-4, 4021-47-0 and others.

6. fD: C 5 ' UbX ' ]hg'gU'hg ]bWi X]b [ L:

CAS No.: 335-67-1, 335-95-5, 2395-00-8, 335-93-3, 335-66-0, 3825-26-1 and others.

7. @5 7! ; , . \$ - # & \$ % - fl k 1 \$ L

fl b 'Ygg'c'h\Yfk ]gY 'ghUHYX 'žh\Y 'XYW]g]c b fi 'Y 'Zc f'WbZc fa ]mfYdc fh]b [ ' ]g'VUgYX 'c b

Binary Statement for Simple Acceptance Rule (w=0) stated in ILAC-G8:09/2019. According to this rule, the judgement of conformity is based on the comparing test results with limits.)

This document is issued by the Company subject to its General Conditions of Service printed overleaf, available on request or accessible at <https://www.sgs.com.tw/terms-of-service> and, for electronic format documents, subject to Terms and Conditions for Electronic Documents at <https://www.sgs.com.tw/terms-of-service>. Attention is drawn to the limitation of liability, indemnification and jurisdiction issues defined therein. Any holder of this document is advised that information contained hereon reflects the Company's findings at the time of its intervention only and within the limits of client's instruction, if any. The Company's sole responsibility is to its Client and this document does not exonerate parties to a transaction from exercising all their rights and obligations under the transaction documents. This document cannot be reproduced, except in full, without prior written approval of the Company. Any unauthorized alteration, forgery or falsification of the content or appearance of this document is unlawful and offenders may be prosecuted to the fullest extent of the law. Unless otherwise stated the results shown in this test report refer only to the sample(s) tested.



FB c "L '9HF &' \* \$) \* &\$

fB UHyl %&! i ' l &\$&'

fDU[ YL', 'cZ%+

# Test Report

f9J 9F @; < H'9@97HF C B =7G'7C "z@H8 "L

\*!, fB C " \*!, žN< C B; < l 5 f 8 "žG<l @B '8 -GH"žB 9K 'H5 -D9=7 Hm&', \* \$žH5 -K 5 B L

Remark

(AfPS): GS PAHs

AfPS (German commission for Product Safety): GS PAHs requirements

(Parameter)	1 (Category 1)	2 (Category 2)		3 (Category 3)	
	(Materials intended to be placed in the mouth, or materials in toys (Directive 2009/48/EC) or articles for children up to 3 years of age with intended long-term skin contact (> 30 seconds))	(Materials that are not in Category 1, with intended or foreseeable long-term skin contact (> 30 seconds) or short-term repetitive contact with the skin)		(Materials not covered by Category 1 or 2, with intended or foreseeable short-term skin contact (≤ 30 seconds))	
		a. 14 (Use by children under 14)	b. (Other consumer products)	a. 14 (Use by children under 14)	b. (Other consumer products)
Naphthalene	< 1	< 2		< 10	
Phenanthrene	< 1 Sum	< 5 Sum	< 10 Sum	< 20 Sum	< 50 Sum
Anthracene					
Fluoranthene					
Pyrene					
Benzo[a]anthracene	< 0.2	< 0.2	< 0.5	< 0.5	< 1
Chrysene	< 0.2	< 0.2	< 0.5	< 0.5	< 1
Benzo[b]fluoranthene	< 0.2	< 0.2	< 0.5	< 0.5	< 1
Benzo[j]fluoranthene	< 0.2	< 0.2	< 0.5	< 0.5	< 1
Benzo[k]fluoranthene	< 0.2	< 0.2	< 0.5	< 0.5	< 1
Benzo[a]pyrene	< 0.2	< 0.2	< 0.5	< 0.5	< 1
Benzo[e]pyrene	< 0.2	< 0.2	< 0.5	< 0.5	< 1
Indeno[1,2,3-c,d] pyrene	< 0.2	< 0.2	< 0.5	< 0.5	< 1
Dibenzo[a,h]anthracene	< 0.2	< 0.2	< 0.5	< 0.5	< 1
Benzo[g,h,i]perylene	< 0.2	< 0.2	< 0.5	< 0.5	< 1
15 PAH (Sum of 15 PAH)	< 1	< 5	< 10	< 20	< 50

(Unit) mg/kg

This document is issued by the Company subject to its General Conditions of Service printed overleaf, available on request or accessible at <https://www.sgs.com.tw/terms-of-service> and, for electronic format documents, subject to Terms and Conditions for Electronic Documents at <https://www.sgs.com.tw/terms-of-service>. Attention is drawn to the limitation of liability, indemnification and jurisdiction issues defined therein. Any holder of this document is advised that information contained hereon reflects the Company's findings at the time of its intervention only and within the limits of client's instruction, if any. The Company's sole responsibility is to its Client and this document does not exonerate parties to a transaction from exercising all their rights and obligations under the transaction documents. This document cannot be reproduced, except in full, without prior written approval of the Company. Any unauthorized alteration, forgery or falsification of the content or appearance of this document is unlawful and offenders may be prosecuted to the fullest extent of the law. Unless otherwise stated the results shown in this test report refer only to the sample(s) tested.



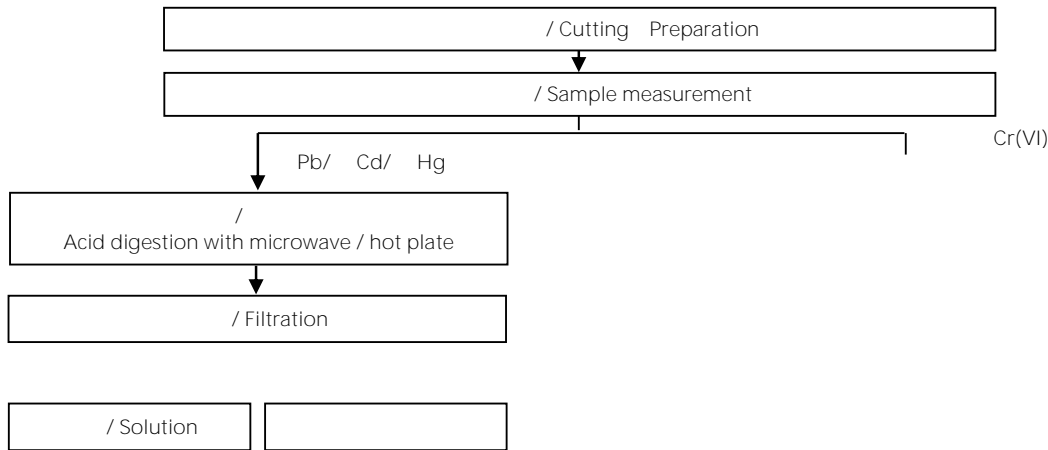
# Test Report

f9J 9F @; < H'9@97HF C B =7G`7C "ž@H8 "L  
 \*!, fB C " \*!, žN< C B ; < l 5 f 8 "žG<l @B '8 -GH"žB 9K 'H5 -D9=7 H M&' , \* \$žH5 -K 5 B L

/ Analytical flow chart of heavy metal

These samples were dissolved totally by pre-conditioning method according to below flow chart.

Cr<sup>6+</sup> test method excluded

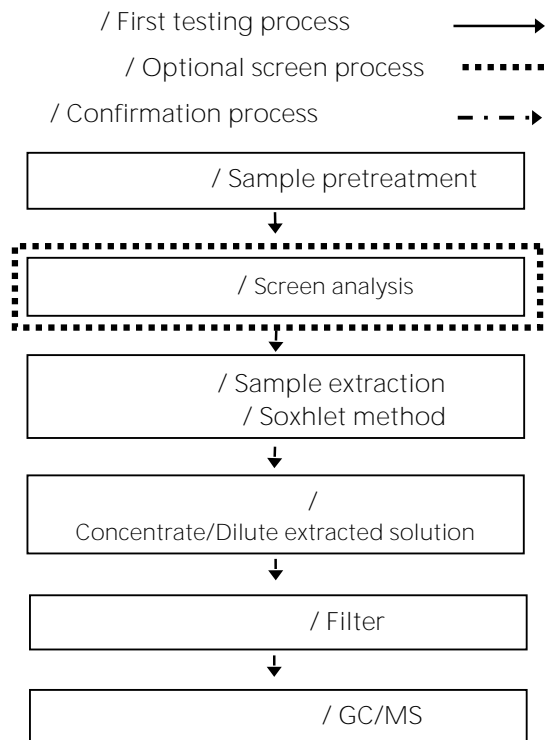


This document is issued by the Company subject to its General Conditions of Service printed overleaf, available on request or accessible at <https://www.sgs.com.tw/terms-of-service> and, for electronic format documents, subject to Terms and Conditions for Electronic Documents at <https://www.sgs.com.tw/terms-of-service>. Attention is drawn to the limitation of liability, indemnification and jurisdiction issues defined therein. Any holder of this document is advised that information contained hereon reflects the Company's findings at the time of its intervention only and within the limits of client's instruction, if any. The Company's sole responsibility is to its Client and this document does not exonerate parties to a transaction from exercising all their rights and obligations under the transaction documents. This document cannot be reproduced, except in full, without prior written approval of the Company. Any unauthorized alteration, forgery or falsification of the content or appearance of this document is unlawful and offenders may be prosecuted to the fullest extent of the law. Unless otherwise stated the results shown in this test report refer only to the sample(s) tested.

# Test Report

f9J 9F @; < H'9@97HF C B =7G'7C "ž@H8 "L  
 \*!, fB C " \*!, žN< C B ; < l 5 f 8 "žG<l @B '8 -GH"žB 9K 'H5 -D9=7 H M&' , \* \$žH5 -K 5 B L

/ Analytical flow chart - PBBs/PBDEs



This document is issued by the Company subject to its General Conditions of Service printed overleaf, available on request or accessible at <https://www.sgs.com.tw/terms-of-service> and, for electronic format documents, subject to Terms and Conditions for Electronic Documents at <https://www.sgs.com.tw/terms-of-service>. Attention is drawn to the limitation of liability, indemnification and jurisdiction issues defined therein. Any holder of this document is advised that information contained hereon reflects the Company's findings at the time of its intervention only and within the limits of client's instruction, if any. The Company's sole responsibility is to its Client and this document does not exonerate parties to a transaction from exercising all their rights and obligations under the transaction documents. This document cannot be reproduced, except in full, without prior written approval of the Company. Any unauthorized alteration, forgery or falsification of the content or appearance of this document is unlawful and offenders may be prosecuted to the fullest extent of the law. Unless otherwise stated the results shown in this test report refer only to the sample(s) tested.

# Test Report

fb c "L '9HF &' \* \$) \* &\$

fb UHYL '%&! > ' ! &\$&'

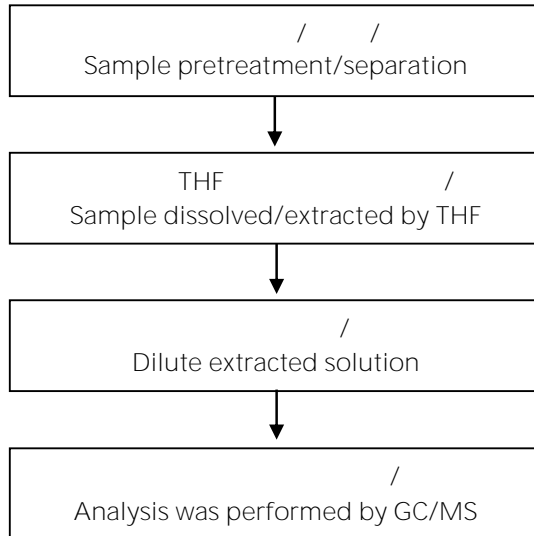
fDU[ YL '%%:cZ%+'

'f9J 9F @; < H'9@97HF C B =7G'7C "z@H8 "L

\*!, 'fB C " \* !, žN< C B; < l 5 'F 8 "žG<l @B '8 -GH"žB 9K 'H5 -D9=7 #HM&', \* \$žH5 -K 5 B L

/ Analytical flow chart - Phthalate

/Test method: IEC 62321-8

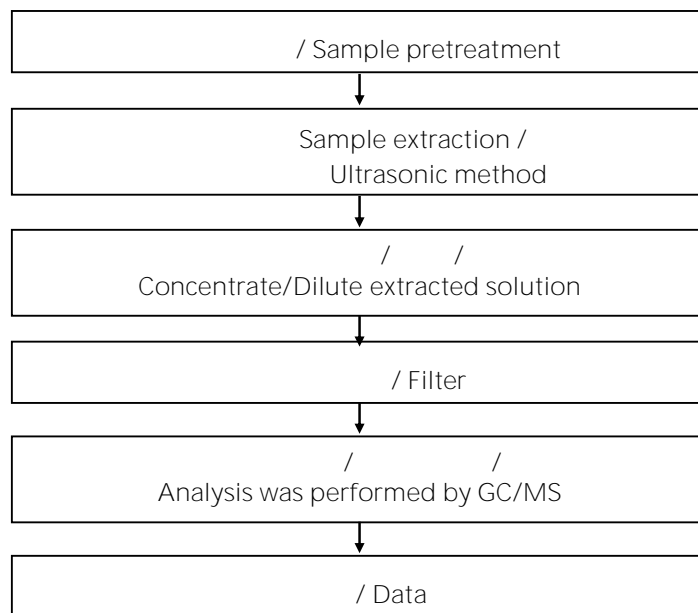


This document is issued by the Company subject to its General Conditions of Service printed overleaf, available on request or accessible at <https://www.sgs.com.tw/terms-of-service> and, for electronic format documents, subject to Terms and Conditions for Electronic Documents at <https://www.sgs.com.tw/terms-of-service>. Attention is drawn to the limitation of liability, indemnification and jurisdiction issues defined therein. Any holder of this document is advised that information contained hereon reflects the Company's findings at the time of its intervention only and within the limits of client's instruction, if any. The Company's sole responsibility is to its Client and this document does not exonerate parties to a transaction from exercising all their rights and obligations under the transaction documents. This document cannot be reproduced, except in full, without prior written approval of the Company. Any unauthorized alteration, forgery or falsification of the content or appearance of this document is unlawful and offenders may be prosecuted to the fullest extent of the law. Unless otherwise stated the results shown in this test report refer only to the sample(s) tested.

# Test Report

f9J 9F @; < H'9@97HF C B =7G`7C "z@H8 "L  
 \*!, fB C " \*!, žN< C B; < l 5 f 8 "žG<l @B '8 -GH"žB 9K 'H5 -D9=7 Hm&', \* \$žH5 -K 5 B L

/ Analytical flow chart - HBCDD

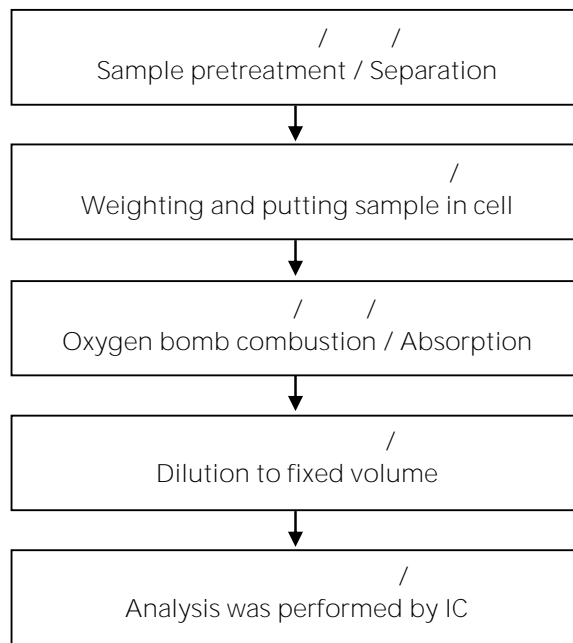


This document is issued by the Company subject to its General Conditions of Service printed overleaf, available on request or accessible at <https://www.sgs.com.tw/terms-of-service> and, for electronic format documents, subject to Terms and Conditions for Electronic Documents at <https://www.sgs.com.tw/terms-of-service>. Attention is drawn to the limitation of liability, indemnification and jurisdiction issues defined therein. Any holder of this document is advised that information contained hereon reflects the Company's findings at the time of its intervention only and within the limits of client's instruction, if any. The Company's sole responsibility is to its Client and this document does not exonerate parties to a transaction from exercising all their rights and obligations under the transaction documents. This document cannot be reproduced, except in full, without prior written approval of the Company. Any unauthorized alteration, forgery or falsification of the content or appearance of this document is unlawful and offenders may be prosecuted to the fullest extent of the law. Unless otherwise stated the results shown in this test report refer only to the sample(s) tested.

# Test Report

f9J 9F @; < H'9@97HF C B =7G`7C "z@H8 "L  
 \*!, fB C " \*!, žN< C B ; < l 5 f 8 "žG<l @B ' 8 -GH"žB 9K 'H5 -D9=7 H&M', \*žH5 -K 5 B L

/ Analytical flow chart - Halogen



This document is issued by the Company subject to its General Conditions of Service printed overleaf, available on request or accessible at <https://www.sgs.com.tw/terms-of-service> and, for electronic format documents, subject to Terms and Conditions for Electronic Documents at <https://www.sgs.com.tw/terms-of-service>. Attention is drawn to the limitation of liability, indemnification and jurisdiction issues defined therein. Any holder of this document is advised that information contained hereon reflects the Company's findings at the time of its intervention only and within the limits of client's instruction, if any. The Company's sole responsibility is to its Client and this document does not exonerate parties to a transaction from exercising all their rights and obligations under the transaction documents. This document cannot be reproduced, except in full, without prior written approval of the Company. Any unauthorized alteration, forgery or falsification of the content or appearance of this document is unlawful and offenders may be prosecuted to the fullest extent of the law. Unless otherwise stated the results shown in this test report refer only to the sample(s) tested.



# Test Report

fb c "L '9HF &' \* \$) \* &\$

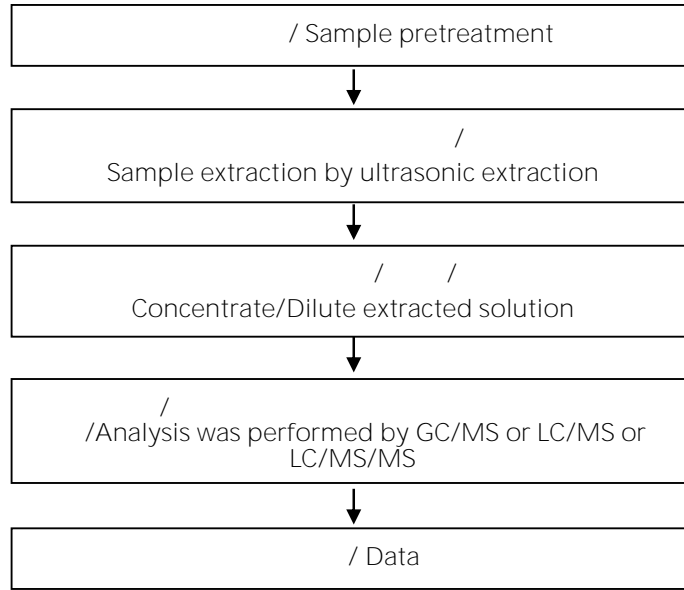
fb UHyl %&! i ' l &\$&'

fDU[ YL % ( ' cZ%+

f9J 9F @; < H'9@97HF C B =7G'7C "z@H8 "L

\*!, fB C " \*!, zN< C B; < l 5 F 8 "zG< l @B ' 8 -GH"zB 9K 'H5 -D9=7 H M&', \* \$zH5 -K 5 B L

( / / ) / Analytical flow chart - PFAS (including PFOA/PFOS/its related compound, etc.)

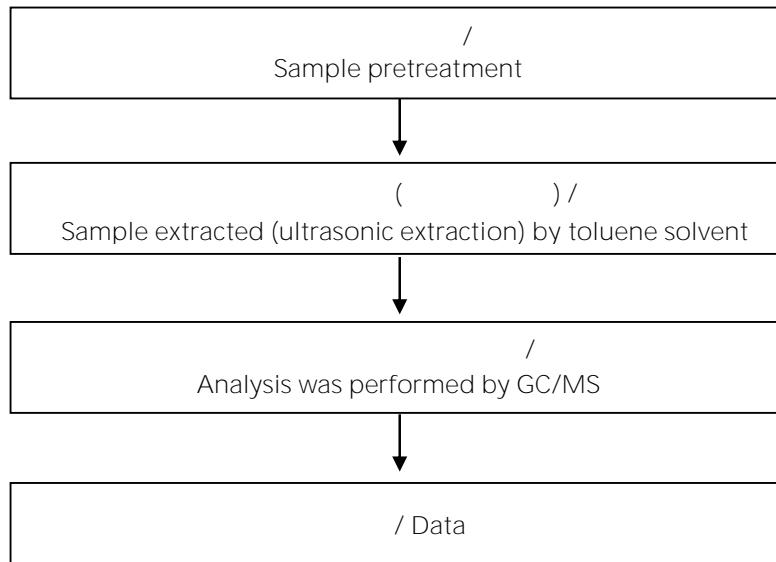


This document is issued by the Company subject to its General Conditions of Service printed overleaf, available on request or accessible at <https://www.sgs.com.tw/terms-of-service> and, for electronic format documents, subject to Terms and Conditions for Electronic Documents at <https://www.sgs.com.tw/terms-of-service>. Attention is drawn to the limitation of liability, indemnification and jurisdiction issues defined therein. Any holder of this document is advised that information contained hereon reflects the Company's findings at the time of its intervention only and within the limits of client's instruction, if any. The Company's sole responsibility is to its Client and this document does not exonerate parties to a transaction from exercising all their rights and obligations under the transaction documents. This document cannot be reproduced, except in full, without prior written approval of the Company. Any unauthorized alteration, forgery or falsification of the content or appearance of this document is unlawful and offenders may be prosecuted to the fullest extent of the law. Unless otherwise stated the results shown in this test report refer only to the sample(s) tested.

# Test Report

ƒ9J 9F @; < H'9@97HF C B =7G`7C "ž@H8 "L  
 \*!, ƒB C " \*!, žN< C B ; < l 5 ƒ 8 "žG<l @B ' 8 -GH"žB 9K 'H5 -D9=7 ƒHM&' , \* \$žH5 -K 5 B L

Analytical flow chart - PAHs (Polycyclic Aromatic Hydrocarbons)



This document is issued by the Company subject to its General Conditions of Service printed overleaf, available on request or accessible at <https://www.sgs.com.tw/terms-of-service> and, for electronic format documents, subject to Terms and Conditions for Electronic Documents at <https://www.sgs.com.tw/terms-of-service>. Attention is drawn to the limitation of liability, indemnification and jurisdiction issues defined therein. Any holder of this document is advised that information contained hereon reflects the Company's findings at the time of its intervention only and within the limits of client's instruction, if any. The Company's sole responsibility is to its Client and this document does not exonerate parties to a transaction from exercising all their rights and obligations under the transaction documents. This document cannot be reproduced, except in full, without prior written approval of the Company. Any unauthorized alteration, forgery or falsification of the content or appearance of this document is unlawful and offenders may be prosecuted to the fullest extent of the law. Unless otherwise stated the results shown in this test report refer only to the sample(s) tested.

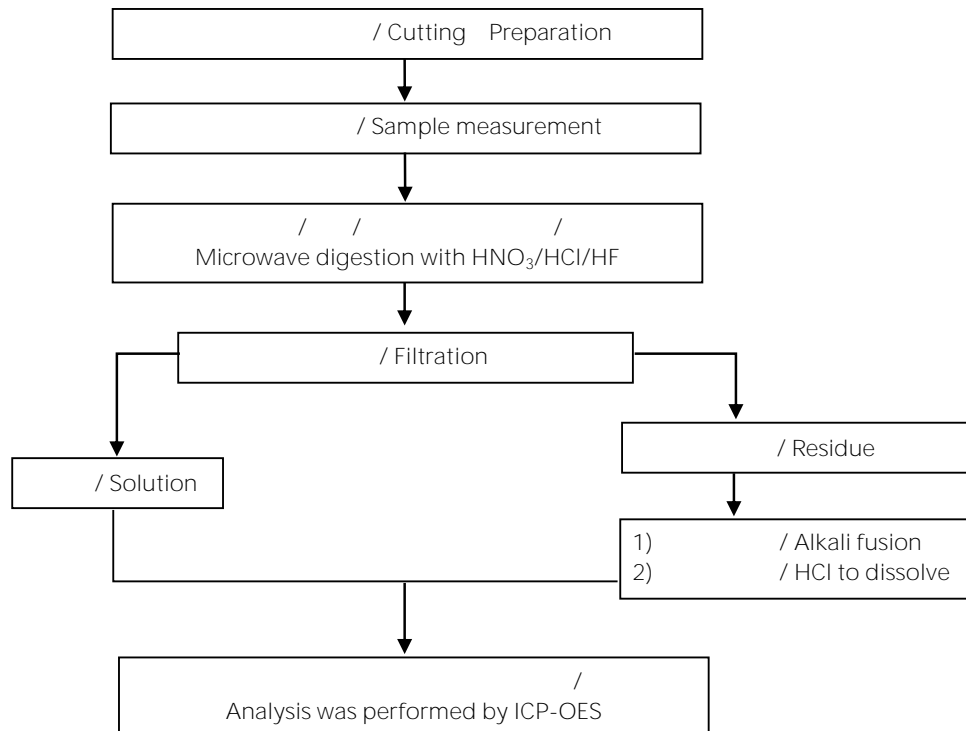
# Test Report

f9J 9F @; < H'9@97HF C B =7G`7C "ž@H8 "L  
 \*!, fB C " \*!, žN< C B; < l 5 f 8 "žG<l @B ' 8 -GH"žB 9K 'H5 -D9=7 H M&', \* \$žH5 -K 5 B L

( ) / Analytical flow chart of elements (Heavy metal included)

These samples were dissolved totally by pre-conditioning method according to below flow chart.

/Reference method US EPA 3051A US EPA 3052



\* US EPA 3051A

/ US EPA 3051A method does not add HF.

This document is issued by the Company subject to its General Conditions of Service printed overleaf, available on request or accessible at <https://www.sgs.com.tw/terms-of-service> and, for electronic format documents, subject to Terms and Conditions for Electronic Documents at <https://www.sgs.com.tw/terms-of-service>. Attention is drawn to the limitation of liability, indemnification and jurisdiction issues defined therein. Any holder of this document is advised that information contained hereon reflects the Company's findings at the time of its intervention only and within the limits of client's instruction, if any. The Company's sole responsibility is to its Client and this document does not exonerate parties to a transaction from exercising all their rights and obligations under the transaction documents. This document cannot be reproduced, except in full, without prior written approval of the Company. Any unauthorized alteration, forgery or falsification of the content or appearance of this document is unlawful and offenders may be prosecuted to the fullest extent of the law. Unless otherwise stated the results shown in this test report refer only to the sample(s) tested.



## Test Report

fb c "L '9HF &' \* \$) \* &\$

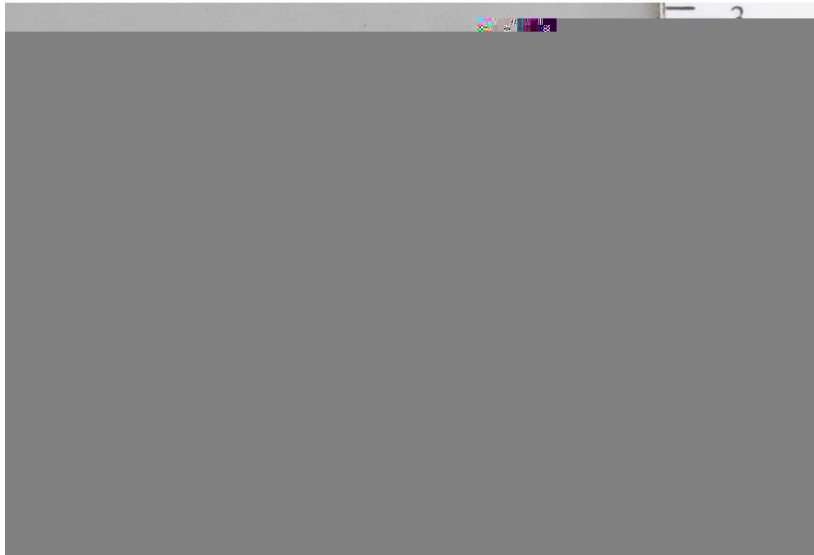
fb UHYL '%&! > ' ! &\$&'

fDU[ YL '%+ 'cZ%+

f9J 9F @; < H'9@97HF C B =7G`7C "z@H8 "L  
\*!, fB C " \*!, zN< C B ; < l 5 f 8 "zG<l @B '8 -GH"zB 9K 'H5 -D9=7 #HM&', \* \$zH5 -K 5 B L

\* / . \*  
(The tested sample / part is marked by an arrow if it's shown on the photo.)

### ETR23605620



f9bX 'cZF Ydc fH L f

This document is issued by the Company subject to its General Conditions of Service printed overleaf, available on request or accessible at <https://www.sgs.com.tw/terms-of-service> and, for electronic format documents, subject to Terms and Conditions for Electronic Documents at <https://www.sgs.com.tw/terms-of-service>. Attention is drawn to the limitation of liability, indemnification and jurisdiction issues defined therein. Any holder of this document is advised that information contained hereon reflects the Company's findings at the time of its intervention only and within the limits of client's instruction, if any. The Company's sole responsibility is to its Client and this document does not exonerate parties to a transaction from exercising all their rights and obligations under the transaction documents. This document cannot be reproduced, except in full, without prior written approval of the Company. Any unauthorized alteration, forgery or falsification of the content or appearance of this document is unlawful and offenders may be prosecuted to the fullest extent of the law. Unless otherwise stated the results shown in this test report refer only to the sample(s) tested.